

JANUS CONTROL VALVES

HOSE BURST VALVES

Manufactured from 316 stainless steel and special engineering polymer selected for their corrosion resistance and resilience to flow erosion. Designed for operation on tap water to EU directive 98/83/EC without additive.

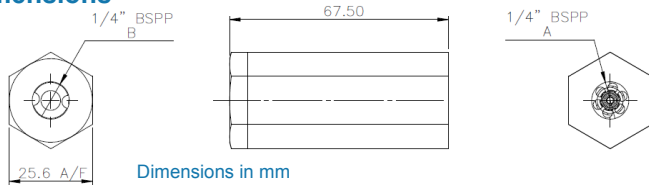
SPECIFICATION		
	DN3	DN6
Operating Pressure Range	0.1 to 200 bar	0.1 to 200 bar
Reverse Flow Adjustment L/min	1 to 5	5-10
Max Flow rate L/min	30	50
Maximum Cv Value in flow control direction	0.02	0.62
Feed Gallery Diameter	6mm	6mm
Porting	1/4" BSP (Parallel)	1/4" BSP (Parallel)
Construction Materials	A.I.S.I 316/Polymer	A.I.S.I 316/Polymer
Media	Water	Water



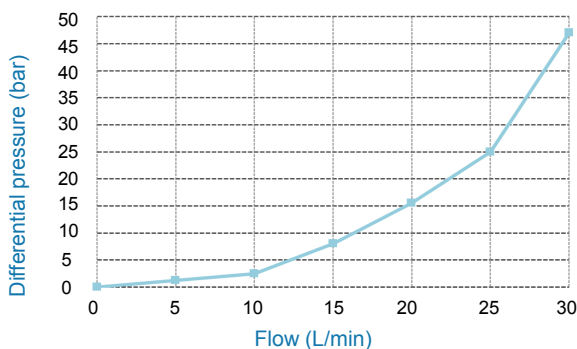
The hose burst valves allows free flow in both directions under normal operating conditions, however in the event of a hose burst the surge in flow from 'B' to 'A' the valve will immediately stop the flow locking pressure in 'B'. The valve can be reset by reversing the flow when the hose has been replaced.

The valve is supplied with an internally adjusted spring. This can be set by TWHC to the flow required.

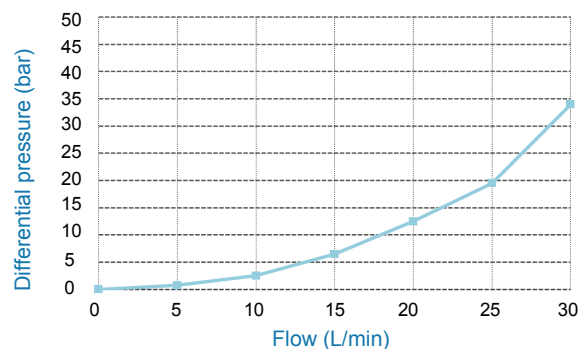
Dimensions

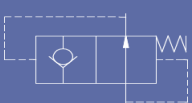


Free Flow Characteristics DN3



Free Flow Characteristics DN6



ORDERING CODES	DN3	DN6
 Hose Burst Valve	591-001	591-007