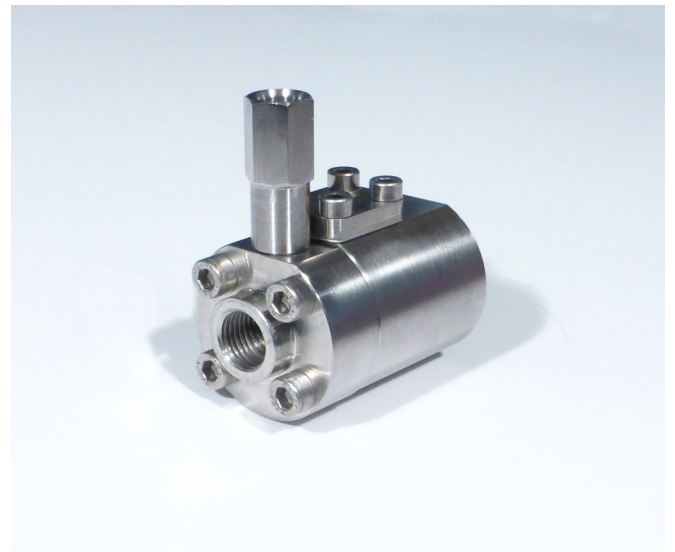


JANUS VALVES

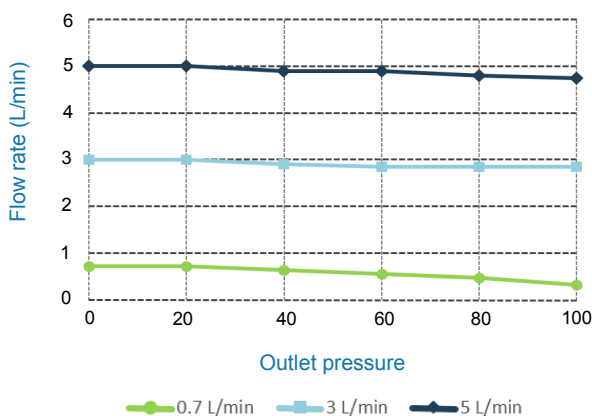
PRESSURE COMPENSATED FLOW CONTROL VALVE

The pressure compensated flow control valve is designed to control the flow rate of tap drinking water in a hydraulic system. Fully adjustable between the specified ranges, the output flow can be regulated and maintained at a constant level irrespective of the output working pressure. The constant rate can be adjusted by allen key then loaded to prevent none desired alteration. The reverse flow gives a slightly restrictive orifice but vertically free for one way control. See graph for characteristics.

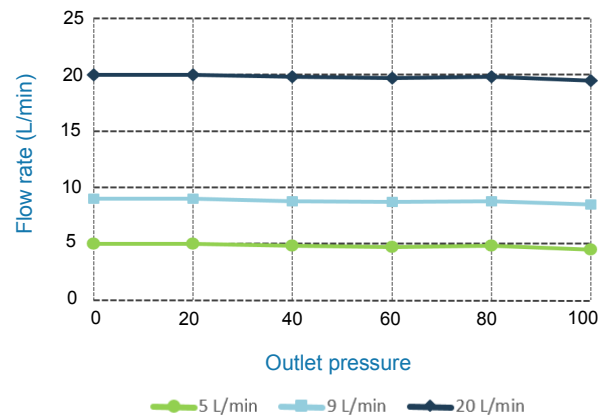
SPECIFICATION		
	DN3	DN6
Operating Pressure Range	5-160 bar	5-160 bar
Maximum Cv Value in flow control direction	0.2	0.7
Feed Gallery Diameter	3mm	6mm
Porting	1/4" BSPP	1/4" BSPP
Construction Materials	316 Stainless Steel Polymer	316 Stainless Steel Polymer
Number of turns Fully open to fully closed	5	6
Media	Tap Water	Tap Water
Flow Range	0.5—5 L/min	3—30 L/min



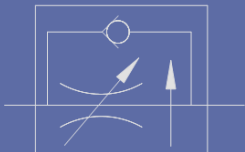
Flow Characteristics DN3



Flow Characteristics DN6



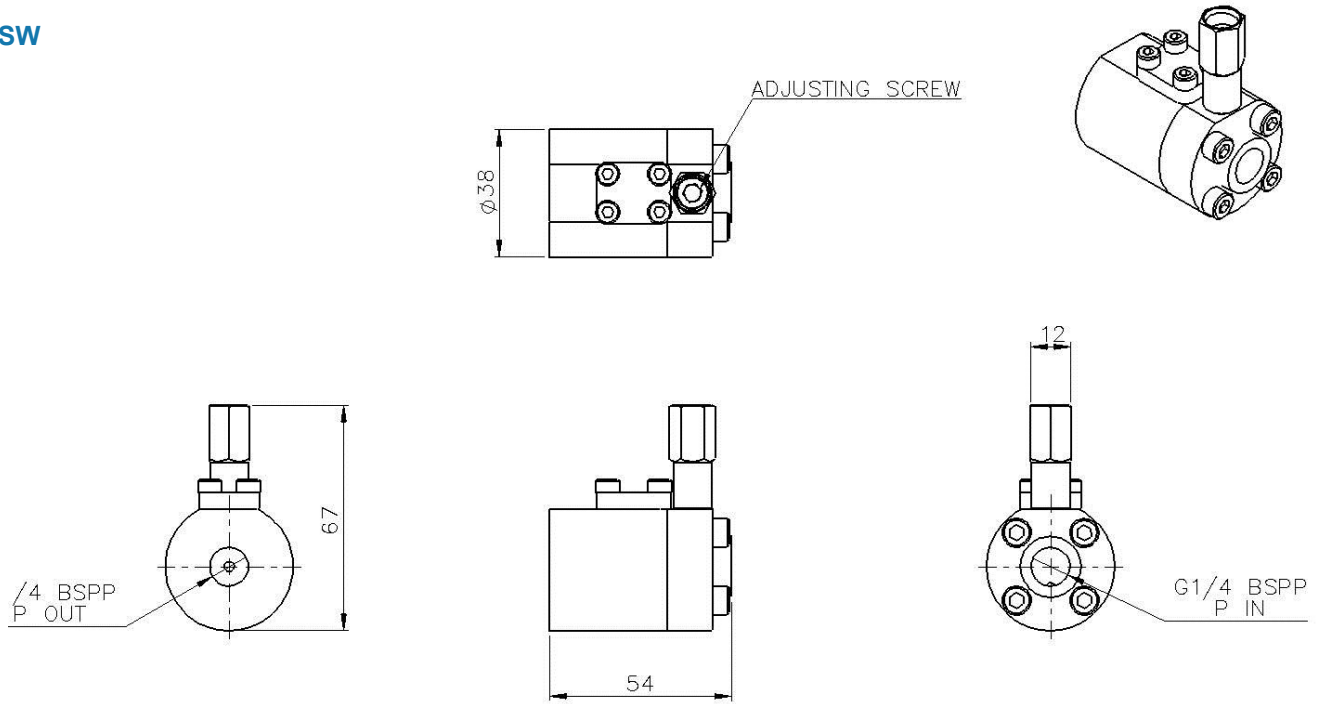
Inlet pressure/ Relief setting 130 bar
Minimum operating pressure 5 bar

ORDERING CODES	DN3	DN6
	216AXSW	216BXSX

JANUS VALVES

PRESSURE COMPENSATING
 FLOW CONTROL VALVE

216AXSW



216BXS

